

pecoSM
AN EXELON COMPANY

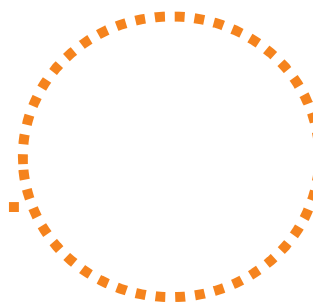
Substation Security Program

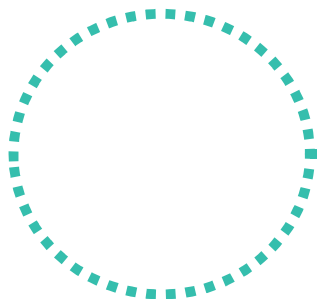
Electrical Association of Pennsylvania

October 31, 2023



DUQUESNE LIGHT CO.



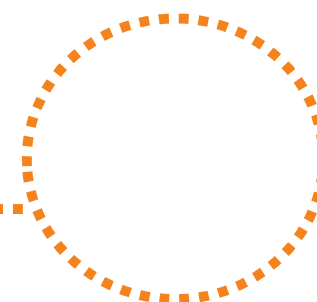


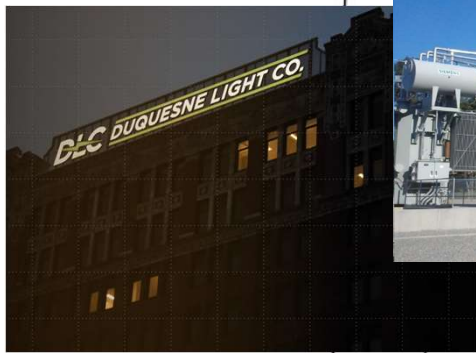
Agenda



pecoSM
AN EXELON COMPANY

- Introduction
- Corporate Security Programs
- Enhancing Substation Security
- Law Enforcement Engagement





DLC
390 Transmission & Distribution Substations

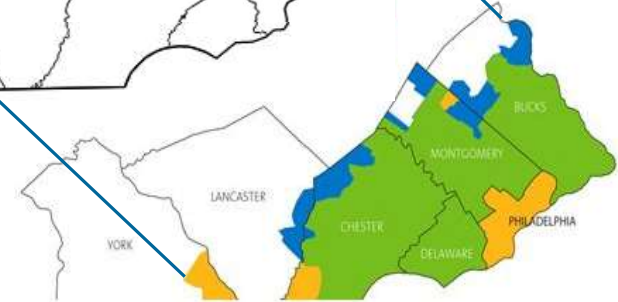
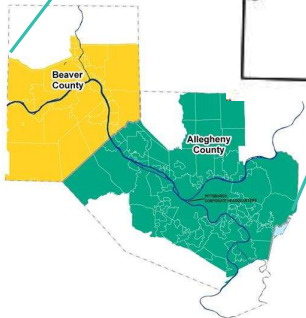
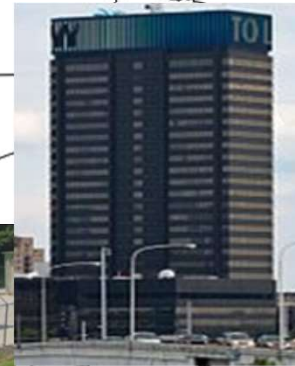
DLC
19 Office & Support Facilities

PECO
29 Gas assets



PECO
550 Electric assets

PECO
32 Office & Support Facilities



Corporate Security Programs



Security Management

- Policy, Procedure, Guidelines, and Standards
- Risk and Vulnerability Assessments
- Training – Active Threat, Situational Awareness, etc.
- Community Outreach



Investigations

- Threats, Harassment, and Attacks
- Motor Vehicle Accidents
- Theft of Services
- Physical Theft



Compliance

- ❖ Support CIP Activities
- ❖ Audit, Inspection, Program Maintenance

Electronic Security Systems

- ❖ Design & Development
- ❖ Administration & Management

Security Messaging

- ❖ Monthly Messages
- ❖ Electronic Billboards
- ❖ Security-centric Safety Messages



Security Command Center

- ❖ Single, Central Location for all Security Inquiries
- ❖ Actively monitor PACS, VMS, IDS, and Security Communication
- ❖ Liaise with Operations – PSP Integrity & Visitor Management



Protective Services

- ❖ Full-time Security Force
- ❖ Critical Facility Management
- ❖ Roving Patrols and Security Response

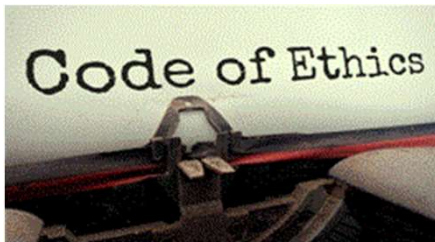


Investigations & Support



Internal Investigations

- ❖ Employee Ethics Violations
- ❖ Insider Threat Program
- ❖ Site Observations (Audits)



External Investigations

- ❖ Thefts
- ❖ Intrusions
- ❖ Vandalism
- ❖ Threat Management (Awareness Maps)
- ❖ Law Enforcement Partnerships/Outreach

Security Incident

INTERNAL SECURITY - ALL PERSONNEL
Philadelphia Region

Assault on Revenue Protection Crew

On Wednesday, August 19, 2020, at approximately 1:00 PM, PECO Employees, also Security Officer, arrived at a project on the 1800 block of N. 5th Street, Philadelphia, Pennsylvania. A Revenue Protection Supervisor at the project, upon arrival, immediately alerted a PECO Employee using a mobile text to a situation. The project Office informed at which time the Revenue Protection Supervisor was notified. The arrival Security Officer utilized training methods to disarm the subject who was able to safely gain control of the situation while Philadelphia Police arrived on scene. PECO personnel gathered these calls, text messages, and photos from the attack, but not all.

As the situation was escalating, and despite the circumstances, the Newark PECO and Philadelphia Police worked in partnership to the best of their ability to ensure the safety of all personnel. The Philadelphia Police are currently investigating the incident and will provide updates as they become available. The situation was resolved through the assistance of the Philadelphia Police and the Newark PECO. The incident was resolved through the assistance of the Philadelphia Police and the Newark PECO.

PECO Security asks all PECO personnel to remain vigilant. If an unexplained security concern arises, please contact your supervisor or the Newark PECO Security Officer. If you have any questions, please contact your supervisor or the Newark PECO Security Officer. If you have any questions, please contact your supervisor or the Newark PECO Security Officer.

Security Reminder

INTERNAL SECURITY - ALL PERSONNEL
Philadelphia Region

Remain Vigilant as Crime Rates Rise

SECURITY REMINDER: Philadelphia's crime rates have risen significantly since the start of the COVID-19 pandemic. This includes an increase in violent crime, including assault, robbery, and sexual assault. PECO Security is committed to providing a safe work environment for all personnel. We encourage all personnel to remain vigilant and report any suspicious activity to their supervisor or the Newark PECO Security Officer. If you have any questions, please contact your supervisor or the Newark PECO Security Officer.

Projects & Project Support

- ❖ Temporary Camera & Alarm Point Installation
- ❖ Personnel Protection Program
- ❖ Fit For Duty
- ❖ Guard Management
- ❖ Physical Badging & Visitor Management
- ❖ Security Training (RHF, Self-Awareness)



Infrastructure & Physical Security

Compliance/Assessments

- ❖ Department of Homeland Security (DHS) Chemical Facility Anti-Terrorism Standards (CFATS) - Inspections and Audits.
- ❖ Pennsylvania (PA) Public Utility Commission (PUC) Audits.
- ❖ Transportation Security Administration (TSA) - Corporate Security Reviews.
- ❖ Law Enforcement Liaison/Memorandum of Understanding (MOU) for select assets.
- ❖ Security Vulnerability Assessments (SVAs).
- ❖ Physical security Site Audits randomly conducted with results shared monthly to leadership, in an effort, to change poor behaviors and enforcing security measures.

Security Equipment CM/PM &

Life Cycle Planning

- ❖ *Develop a business case to acquire the security equipment corrective maintenance budgets from various departments to align with Exelon OPCO counterparts.*
- ❖ *Corrective and Preventative Maintenance Program for all PECO security equipment.*
- ❖ *Security Equipment Life Cycle Program management.*



Projects & Project Support

- ❖ *Exelon Facility Enhancement Program (FEP).*
- ❖ *Exelon O&SF Physical Security Enhancement Program.*
- ❖ *Access control support (card readers, clearances, alarm testing etc.)*
- ❖ *Alarm reduction measures.*
- ❖ *PECO Security Drone Program*
 - ❖ *Utilized in both Investigations and Site Vulnerability Assessments.*



Electronic Access Control

- ❖ PECO utilizes two primary means of Access Control:
 - ❖ Card Readers (CCure)
 - ❖ eKey
- ❖ Both systems provide electronic access control.



Enhancing Substation Security



Physical Security Hardening

- Solid and Bullet Resistive Fencing
- Attack Resistant Barriers at Critical Components
- Climb Resistant Fence Materials
- Fence Tension System Upgrades



Electronic Security Enhancements

- Two Factor Authentication
- Video Analytics
- Gunshot detection
- Ground Level Radar/LiDAR
- Drone Surveillance/Detection



Compliance Support

- Tailgate Detection
- Multi-point Door Monitoring
- Audible Local Alert w/Voice Commands

Security Beyond Compliance

- PACS/VMS
 - Non-CIP Transmission Substations
 - Distribution Substations
- Real-time Intelligence Gathering



Law Enforcement Outreach and Training

- Familiarization with Substations in their Jurisdiction
- Representative National and Local Security Incidents
- Function of a Substation – How it Works
- Law Enforcement Response – Regulation and Safety

Law Enforcement Engagement

Education

- ❖ Educate law enforcement about
 - PECO assets
 - Critical infrastructure
 - What to look for
 - Who to contact
 - Response



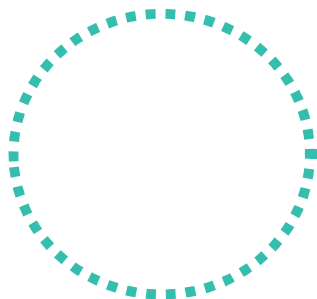
What to Look For – Site Observations



Parking Zoning

- ❖ Partner with City of Philadelphia Streets Deputy Commissioner
- ❖ Identify PECO assets that should have a non-tractor trailer parking zone
- ❖ Department of Homeland Security initiative as a National Security Risk.

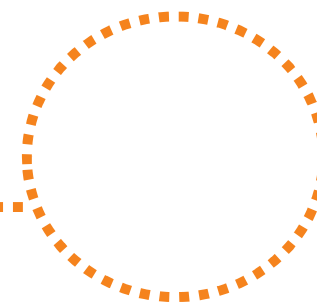




pecoSM
AN EXELON COMPANY

Duquesne Light Training for Law Enforcement

Presentation Given to Local Police Departments



Substation Security for Law Enforcement

October 23, 2023

William B. Johnson, CPP



Objectives

Goals for this Training

- Introduce DLC Corporate Security personnel to the Western Pennsylvania Chiefs of Police Association
- Provide a summary of recent substation attacks, vandalism, and theft in the US
- Provide a summary of substation and powerline incidents at Duquesne Light Company
- Briefly explain the function of a Substation
- Ask for LE agency assistance with Substation Protection
- LE response to Substation Emergencies
- Public safety process for Entering a Substation
- Description of DLC intelligence and liaison activities



DLC Corporate Security Team

Michael C. Nelson, CPP
Senior Manager

Kevin R. Martincic
Supervisor

William B. Johnson, CPP
Security Specialist

Shannon P. Ringler, PSP
Security Specialist

Andrew N. Ondich, CPP
Security Specialist

James R. DeLuca
Security Associate/Investigator



Recent Incidents – Nationwide

- February 6, 2023 – Baltimore, MD
- January 17, 2023 – Thomasville, North Carolina
- Christmas Day 2022 – Pierce County, Washington
- December 7, 2022 – Ridgeway, South Carolina
- December 4, 2022 – Moore County, North Carolina
- 2013 – San Jose, California
- Drones/Unmanned Aerial Vehicles



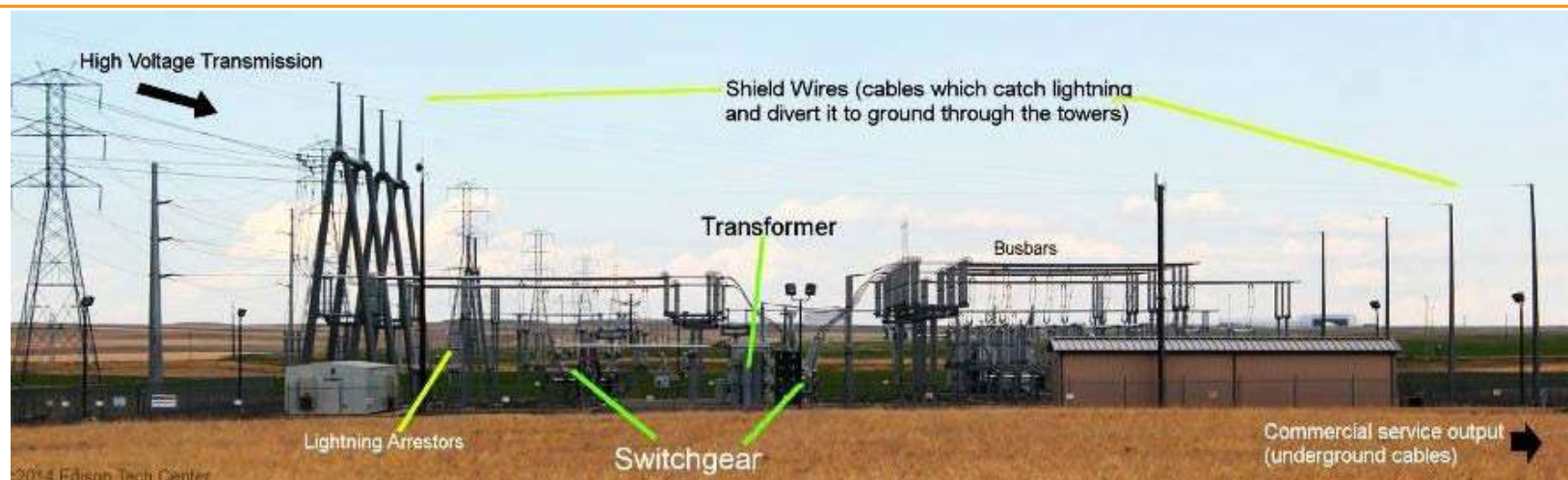
Recent Incidents – Duquesne Light

- Theft of Copper Grounds – Verona
- Theft of Copper Grounds – Oakmont
- Suspicious Activity – Collier
- Theft of Copper Conductor – West Mifflin
- Theft of Scrap Copper Conductor – West Mifflin
- Theft of Scrap Copper – Penn Hills
- Theft of Off-road Vehicle – West Mifflin
- Vandalism of DLC Substation – Wilkinsburg
- Bullet Hole in Transformer Casing – Logans Ferry Substation
- Bullet in Aerial Cable – Highland Park/Wilkinsburg Circuit



Function of a Substation

What is a Substation?



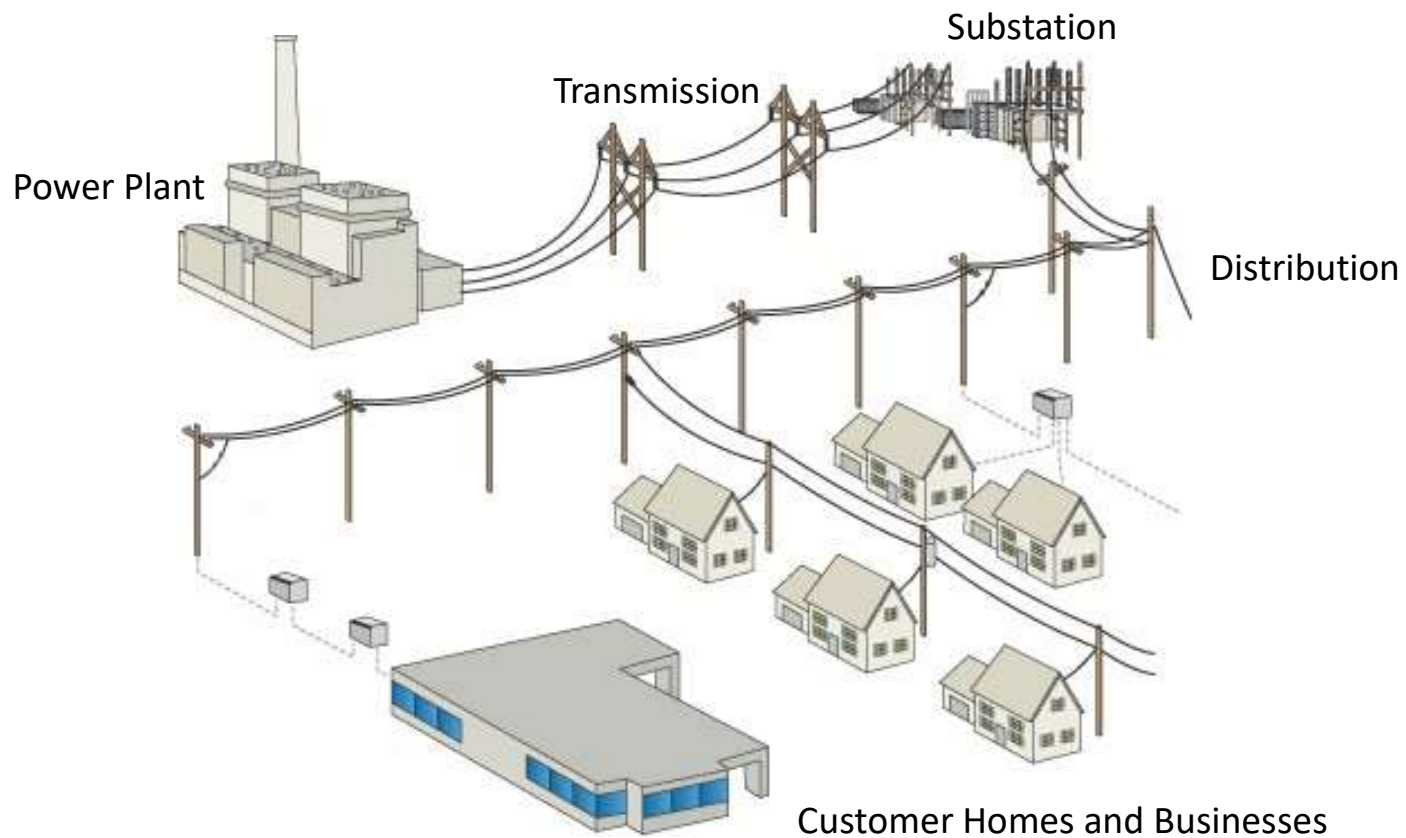
Electric Power Facility

- Transforms power from one voltage to another *or* from one system to another
- Uses Switches, Circuit Breakers, Buses, and Transformers to switch power circuits

Primary Purpose

- “Step Down” electricity from High Voltage Transmission System to Lower Voltage Distribution Systems to easily supply homes and businesses

Where does it fit?



Law Enforcement Assistance



Law Enforcement Assistance to DLC

- Know the location of DLC substations and other critical facilities within your jurisdiction. Know access roads, terrain, and natural hazards.
- During patrol activities, be aware of persons, vehicles, or activities that seem suspicious. Look for cut fences, cut locks, open gates, pulled up ground wires, electrical arcing, or vandalism.
- Respond to DLC emergencies or other calls for assistance.
- Ensure all officers receive pass-on information regarding threats, suspicious activity reports, thefts, etc. related to DLC facilities and assets.
- Contact the DLC Operations Center emergency number or DLC Corporate Security with any questions, concerns, or suspicious activity reports.
- **Do not enter substation yards** without DLC escort. Be aware of the hazards associated with substation electrical energy.

Response to Substation Emergencies

Understanding Where You Are



Substation names and locations are posted on gates.

Note:

Substation naming may not describe a geographic location

For example:

Dravosburg Substation is not in Dravosburg

Carson Substation is not on Carson Street

Law Enforcement Response

Emergencies discovered by Law Enforcement, call the DLC Operations Center

- **Emergency number is 412-393-8911**, and is posted on all substation gates
- Describe the hazard, incident, or suspicious activity.
- DLC personnel will be dispatched to the scene as determined by the emergency
 - DLC contract security personnel in a marked security vehicle (St. Moritz Security)
 - DLC Corporate Security personnel
 - DLC Operations personnel

Officer safety is paramount – please follow all DLC Operations Center instructions

- **Do not enter substation yards or allow other first responders to enter without DLC escort or specific permission from the DLC Operations Center**
- Please document any incident using your standard report process
- DLC Corporate Security or contract security personnel will request the report number

Safe Entry into Substations

- When possible, conduct all public safety activities from outside the substation fenceline, such as investigations, patrols, etc.
- Duquesne Light employees will serve as subject matter experts and escorts if entry inside the substation fence or control house is required
- FR-rated coveralls and EH-rated footwear are required to safely enter.
 - Apart from firefighter uniforms, most public safety uniforms and footwear do not meet the Fire Resistance (FR) and Electrical Hazard (EH) ratings necessary for personal protection while inside a substation



Safe Entry into Substations

- All substation equipment must be treated as energized or “live” until proven otherwise.
 - **Electrical current does not have to be flowing through the equipment for voltage to exist, to be ENERGIZED.**
- Individuals who are ***Not Qualified*** to work on energized conductors must maintain the following distances from all equipment that might be energized.

Voltage	Distance
Under 50kV	10 Feet
69kV	10'8"
138kV	13 Feet
345kV	20 Feet

A good rule of thumb is to walk or stand at least 20 feet away from any equipment inside a substation yard.

Liaison & Intelligence Activities

- Local, city, and county police & emergency management agencies in Allegheny and Beaver Counties
- Western PA All Hazards Fusion Center
- PA Region 13 Utility Security Subcommittee
- PA State Police and PA Criminal Intelligence Center (PaCIC)
- FBI Pittsburgh Critical Infrastructure squad, DSAC, and FBI InfraGard
- US Department of Homeland Security and CISA
- US National Counterterrorism Center
- E-ISAC: Energy Information Sharing and Analysis Center
- NATF: North American Transmission Forum
- ASIS International Western PA Chapter
- ASIS International Utility Security Council



Key Contact Numbers

- DLC Operations Center Emergency Number: 412-393-8911
- DLC Operations Center: 412-798-7411
- DLC Corporate Security Command Center: 412-393-8388



Questions, Comments, Discussion





Thank You

DLC
— DUQUESNE LIGHT CO. —